




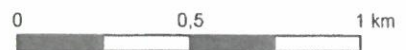
pohjavesialueet © SYKE, ELY-keskus, taustakartta © Maanmittauslaitos

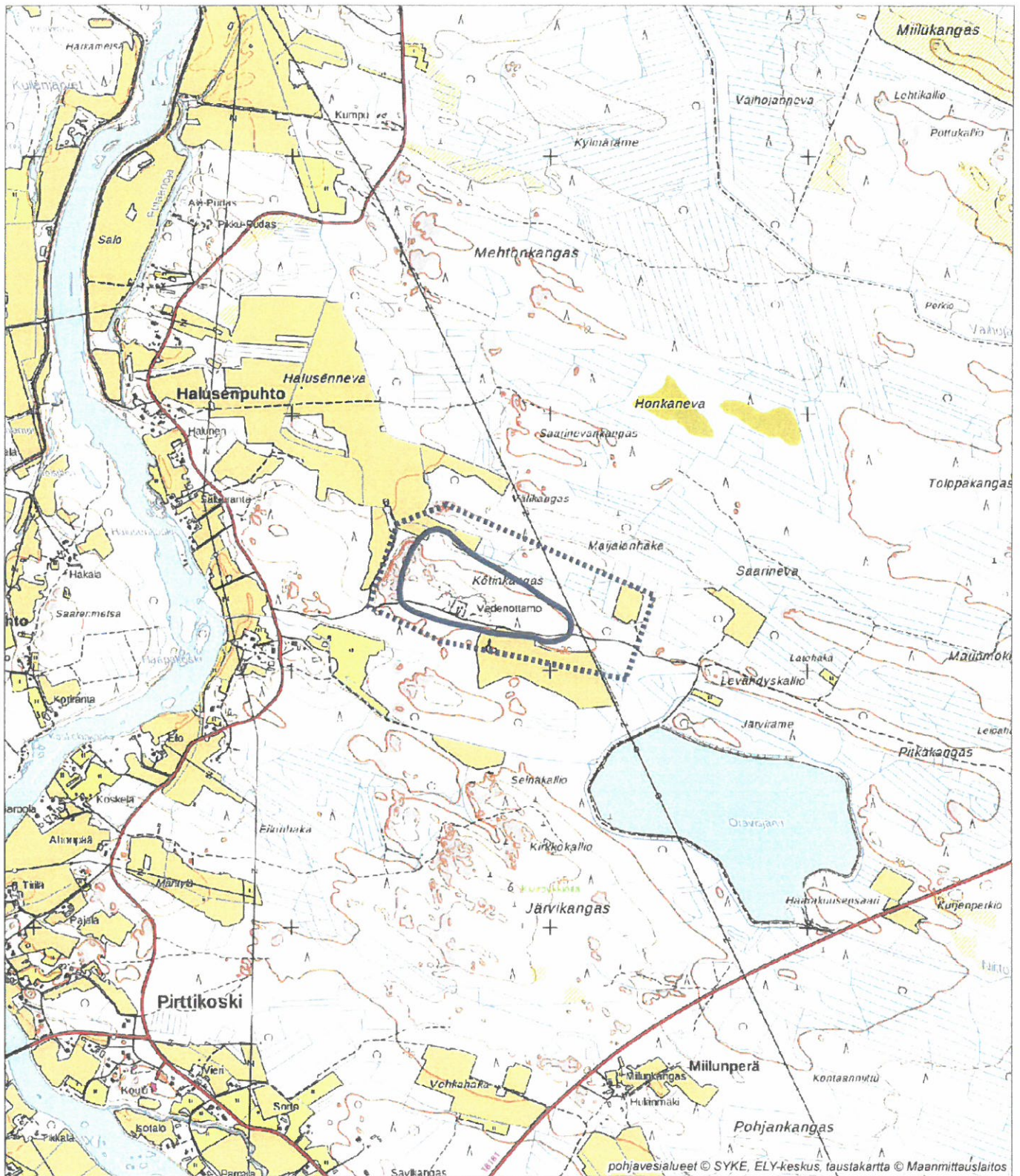
Kopisto, 11 625 001, luokka 1 Pyhäjoki

-  Pohjavesialueen raja
-  Varsinaisen muodostumisalueen raja
-  Pohjavedenottamo





17.1.2018 1:20 000



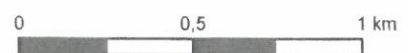


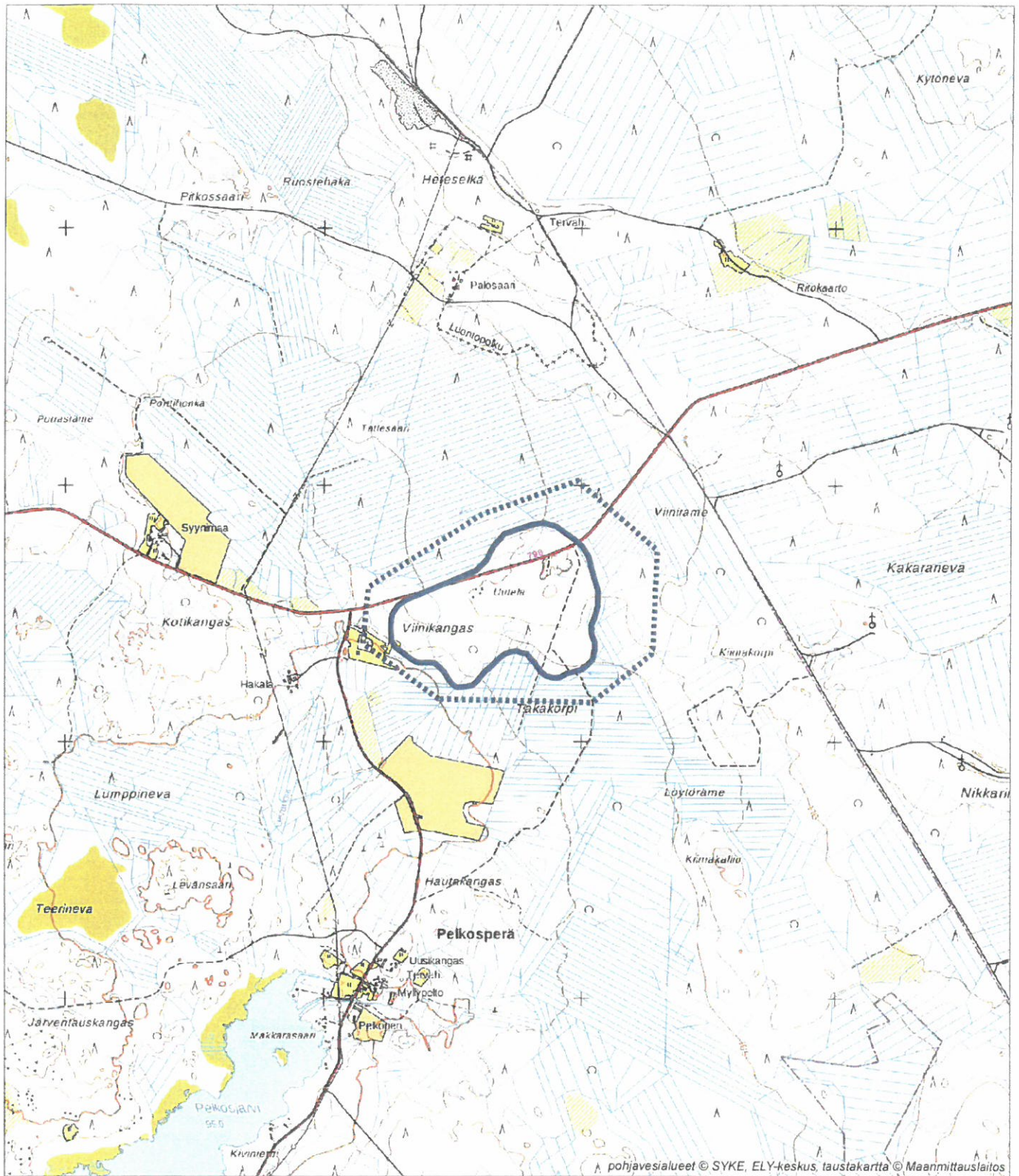
Kötinkangas, 11 625 002, luokka 2 Puhajoki

-  Pohjavesialueen raja
-  Varsinaisen muodostumisalueen raja





17.1.2018 1:20 000





pohjavesialueet © SYKE, ELY-keskus, taustakartta © Maanmittauslaitos

Viinikangas, 11 625 003, luokka 2 Puhjajoki

-  Pohjavesialueen raja
-  Varsinaisen muodostumisalueen raja



17.1.2018 1:20 000

